



1
Book through a Travel Management Company (TMC) for confidence that every stage of your journey meets strict criteria and help is always at hand

We recommend using a limousine service booked through your TMC, or where possible take a private car, walk or cycle to the train station



2



3
On arrival at the train station, ensure you are wearing a mask, use disinfectant and practise social distancing (1m+) from other travellers

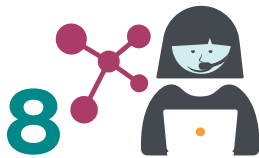
When boarding the train, continue to wear a mask and practice social distancing from other passengers



4

Use process in reverse for the return journey

5
At the end of your trip, your data will be securely held by your TMC who can arrange testing or alert you should there be any Covid-19 follow up required.



6



7
During your work, practice social distancing (1m+ from others) and remember to frequently wash your hands

8



5
If taking a taxi to your final destination, wear a mask and consider using disinfectant to clean handles and frequently touched surfaces

Onboard, follow the train company's advice, wear a mask and bring your own food/drink if permitted

